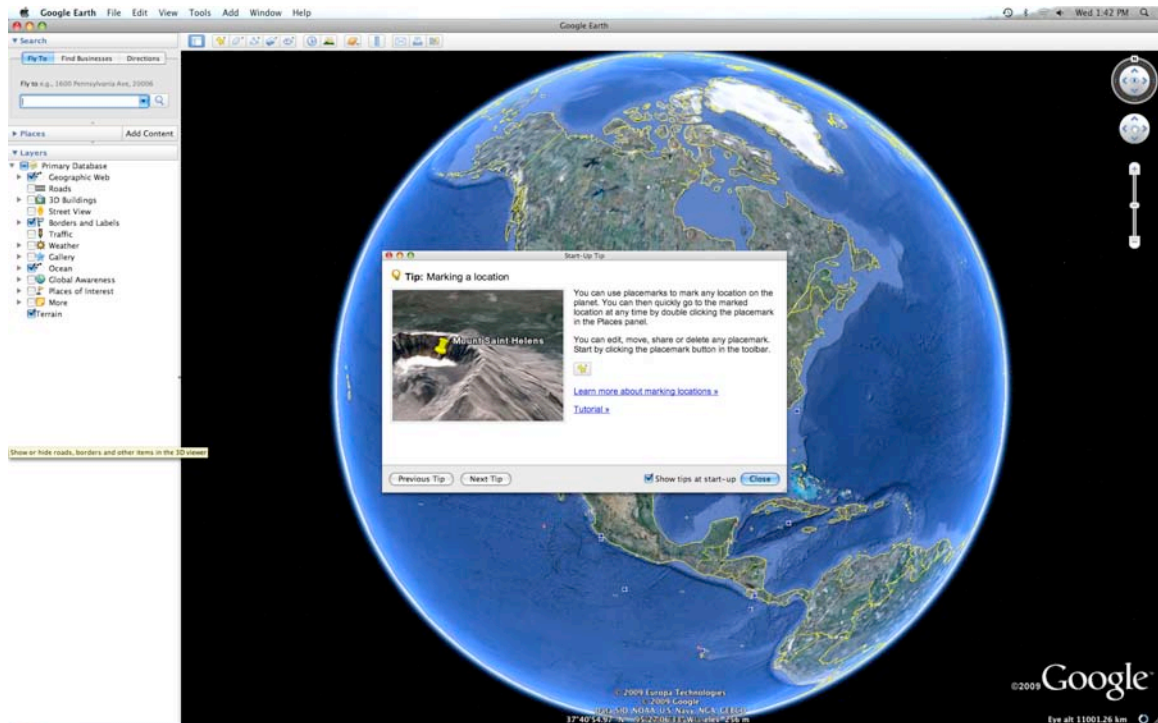


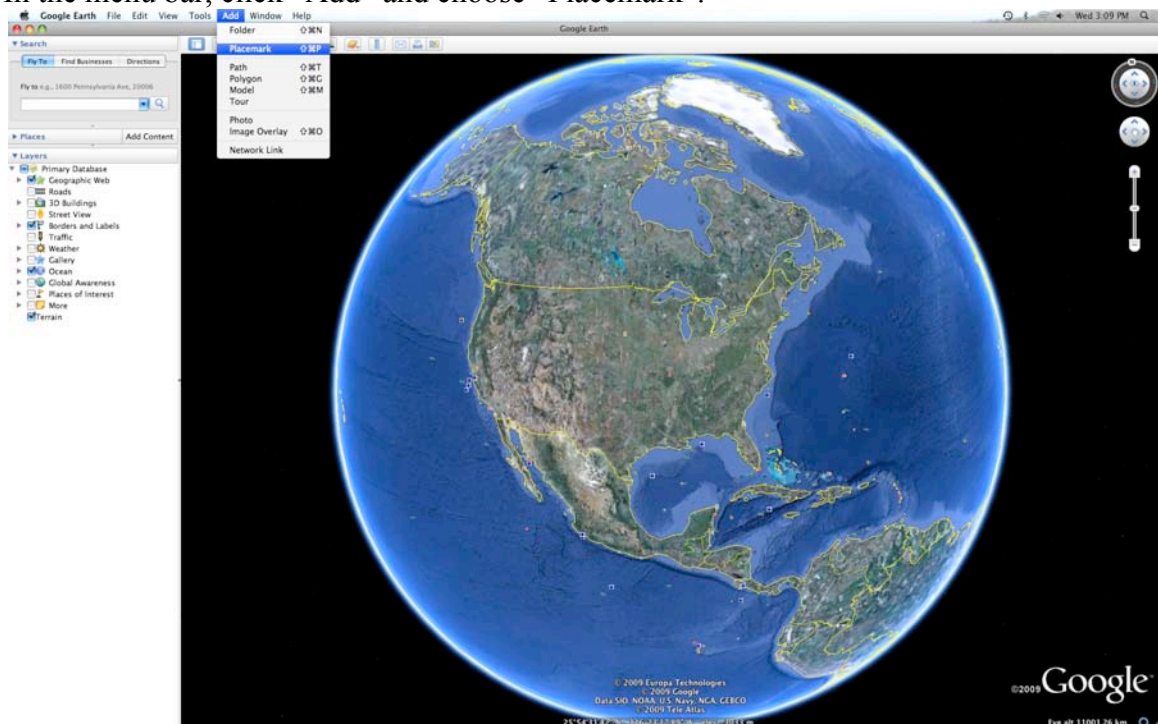
Using Google Earth for Mac Users

Adding Placemarks in Google Earth for Mac Users

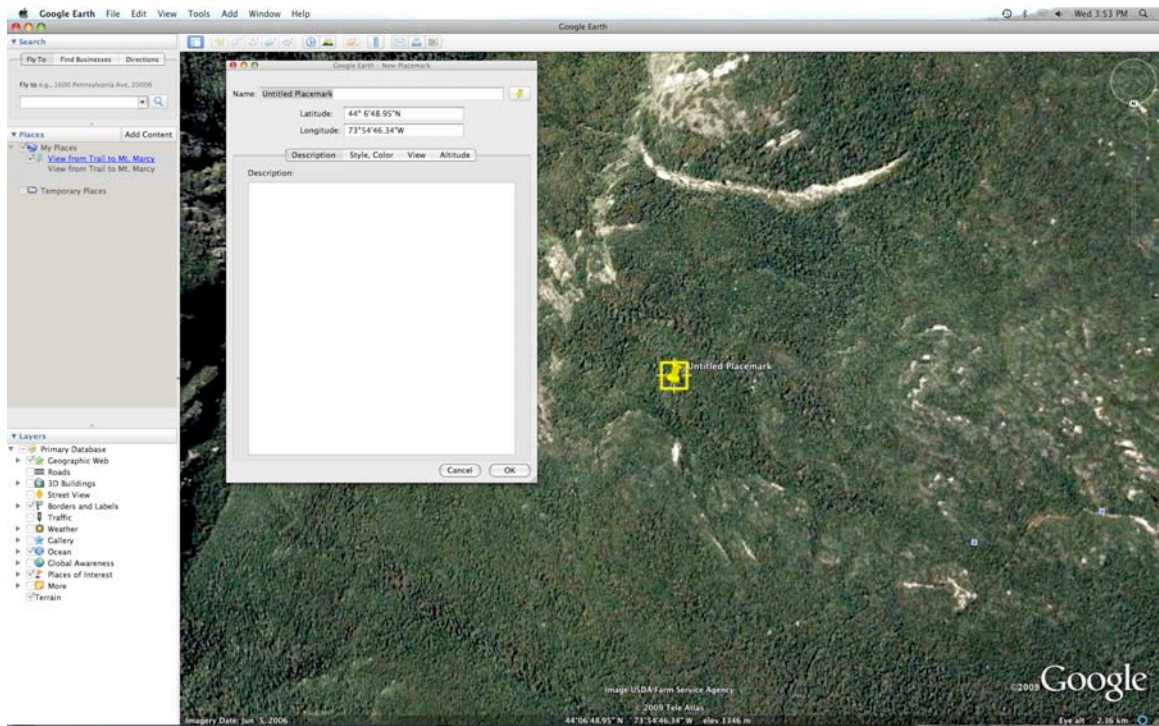
1. Open Google Earth by clicking on the icon on your desktop or by clicking through the “Applications” folder. It will look like this:
Note: Read and close the start-up tip if it appears during your Google Earth start-up. Sometimes the tips are really useful!



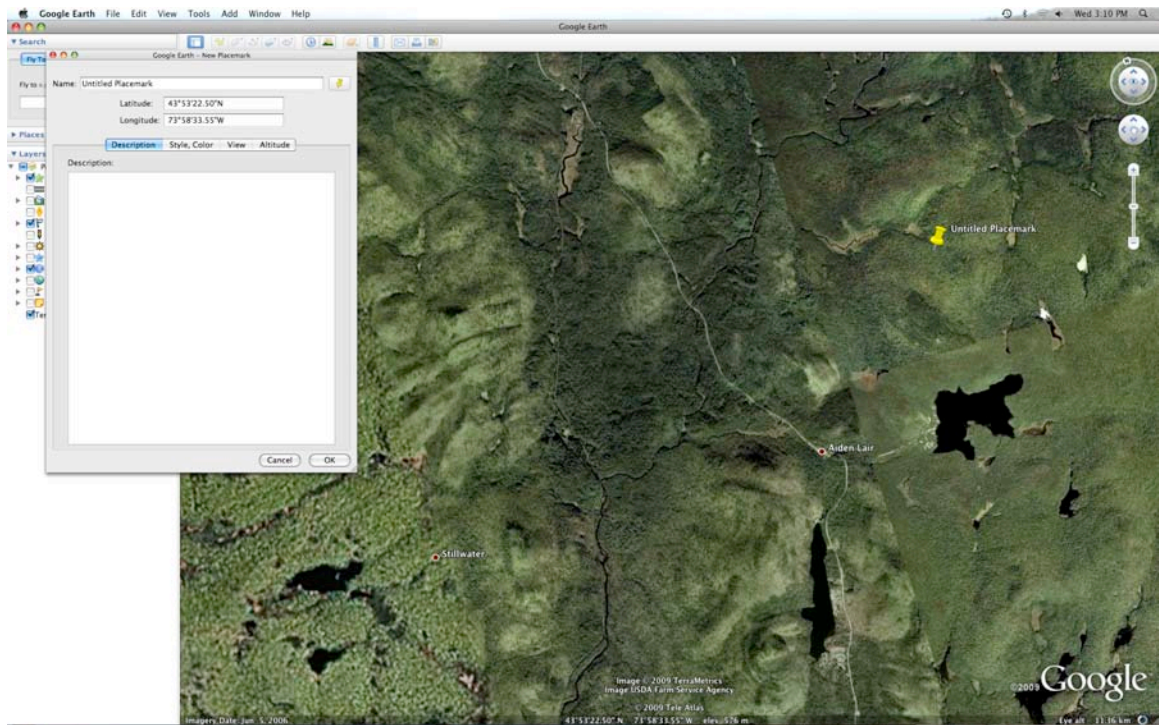
2. In the menu bar, click “Add” and choose “Placemark”.



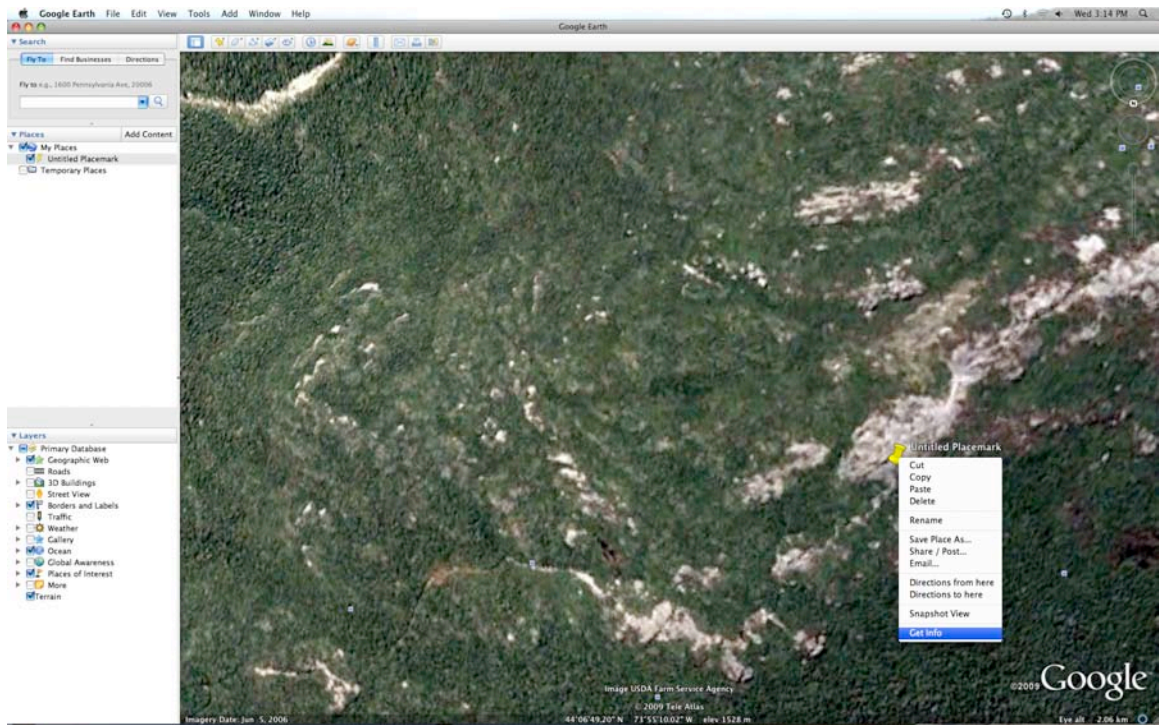
3. The screen will look like this. Using the mouse move the pushpin denoting the place mark to the desired location. Note: Zooming in will allow you to be more accurate with placement.



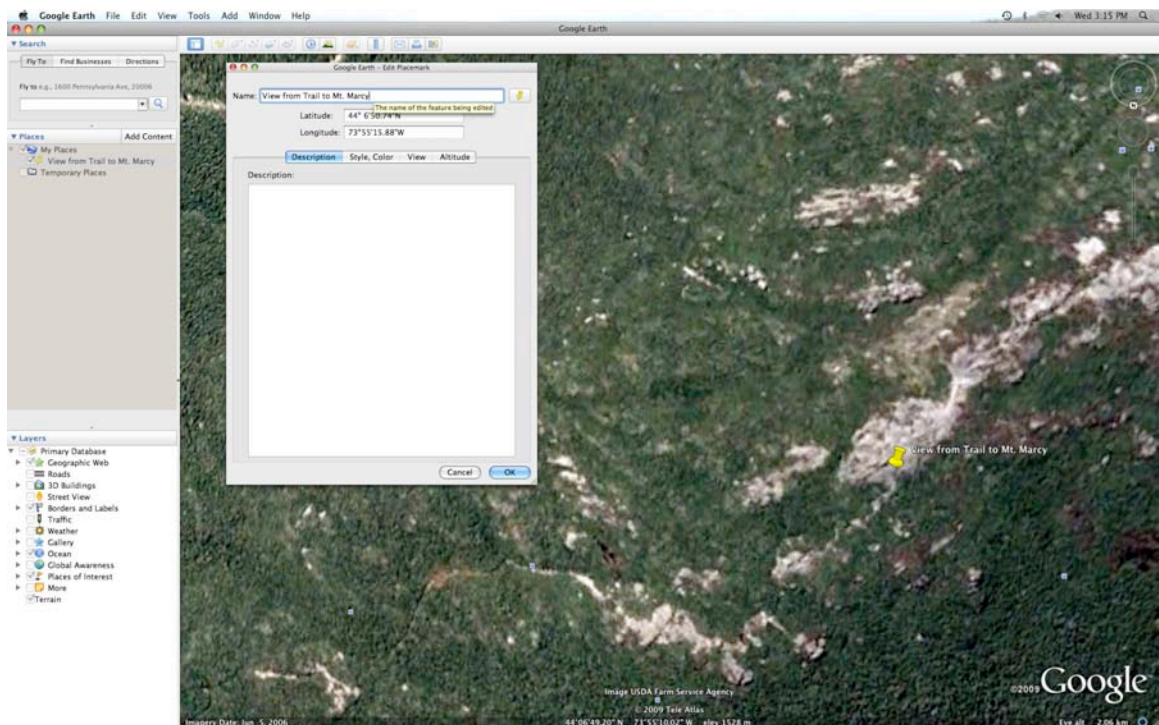
4. Once you have selected your location click “ok”. This will save your placemark.



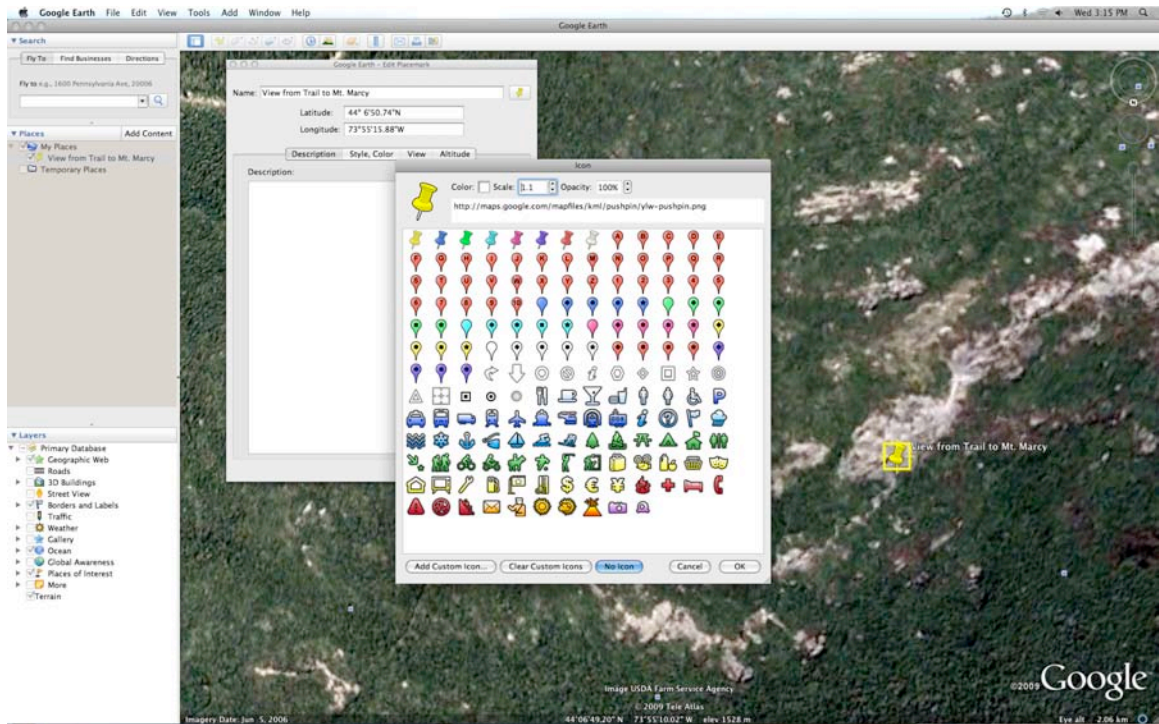
- To change what the placemark looks like and how it is labeled, right click (command+click) and choose “Get Info”.



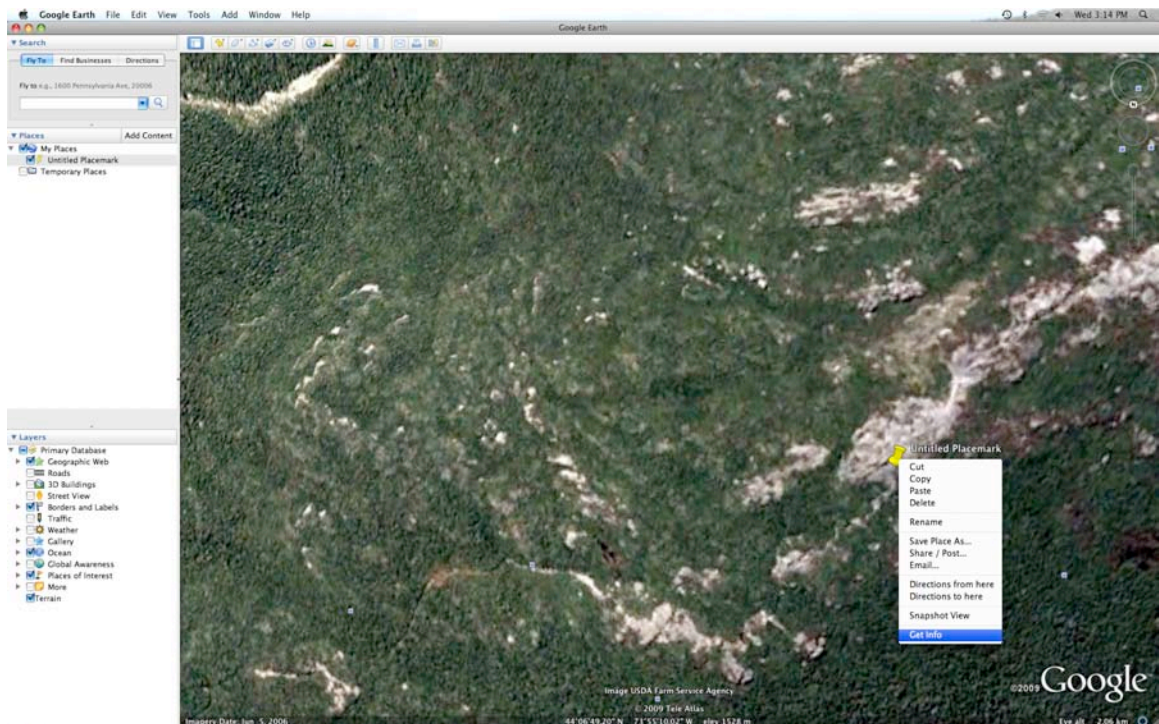
- A box will appear that allows changes to be made. Change the title of the placemark by typing an appropriate title in the line labeled “Name”.



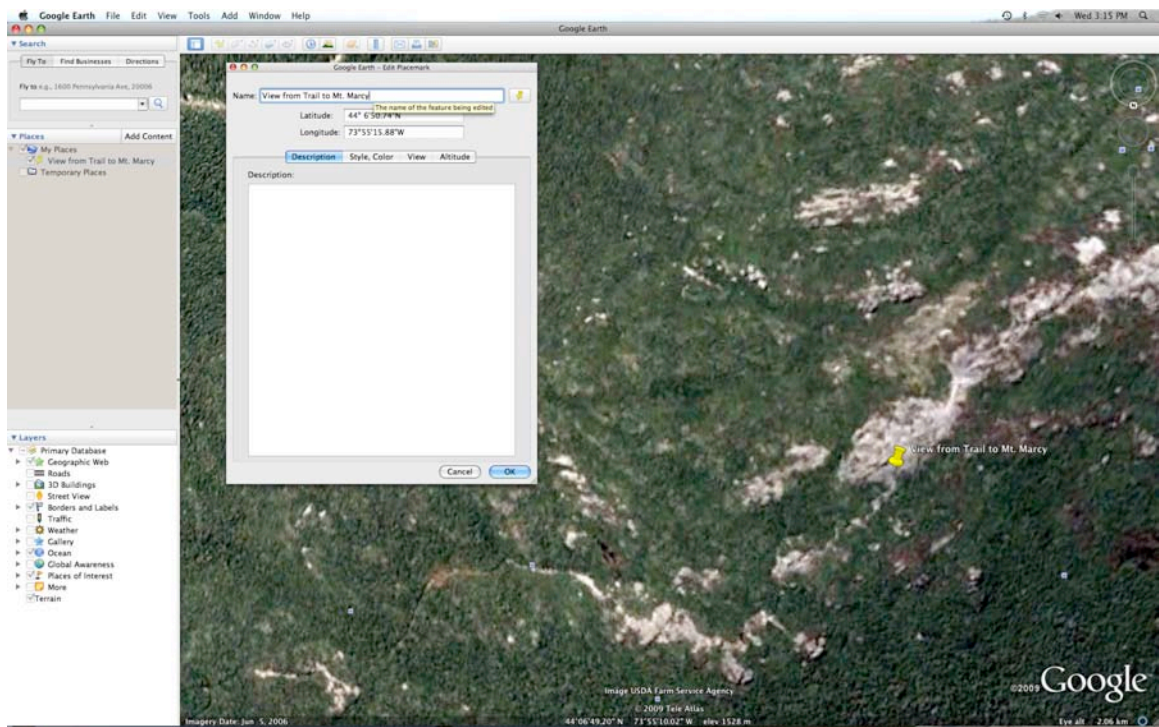
- To change the pushpin color or shape, click on the button beside the name with the pushpin on it. Another box will open with color and shape options. Select the one you wish to use. Once selected, click “ok”.



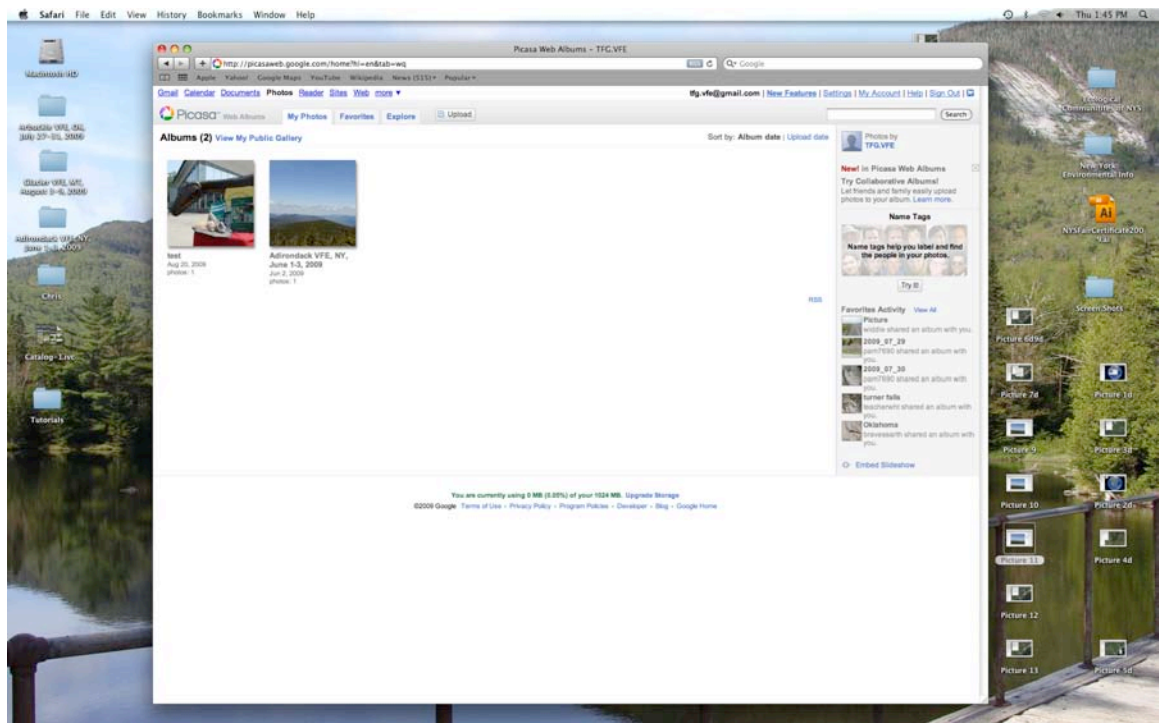
- To add a photo to your Placemark that will appear when the mark is clicked, right click (command+click) and select “Get Info”



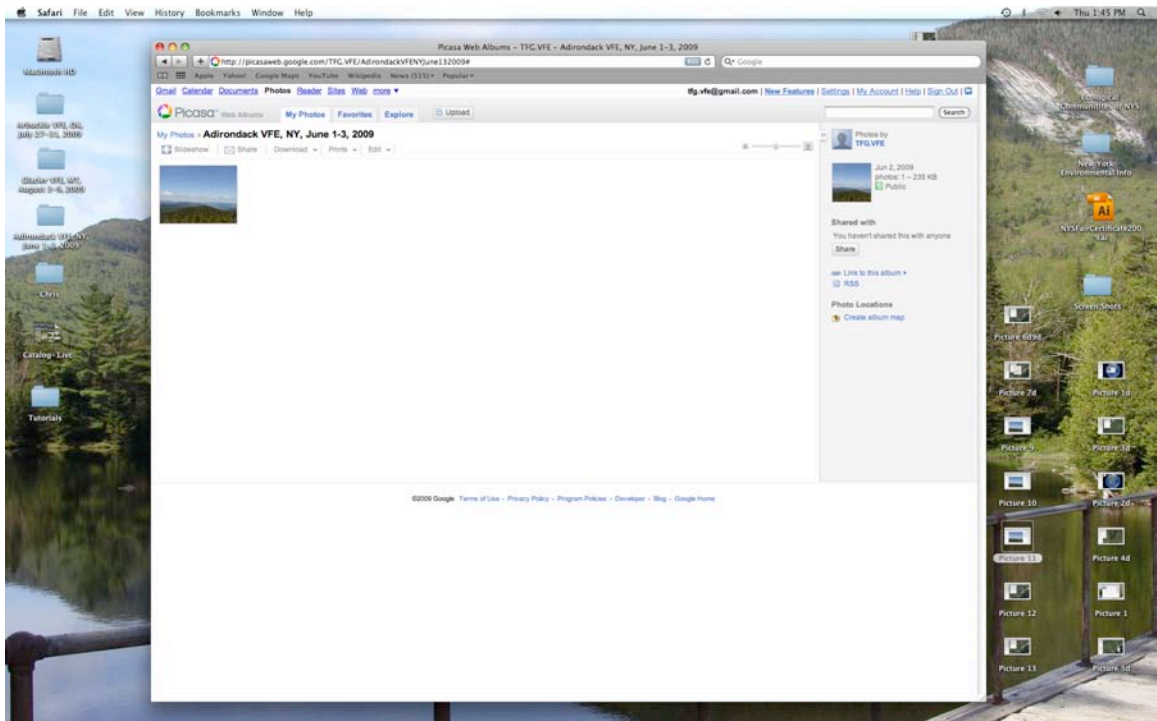
9. In the window that opens there is a section labeled “Description”. This is where pictures and text are added that will appear in the Placemark.



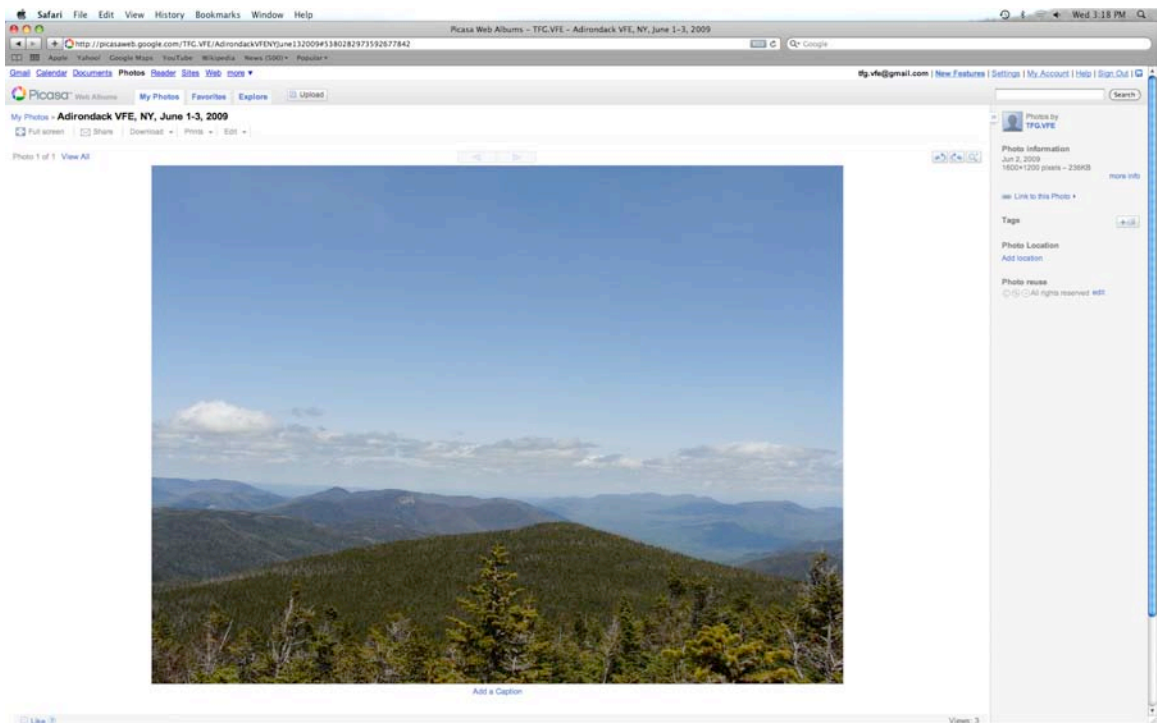
10. To find the text needed to add a picture to the placemark, open Picasa Web Albums.



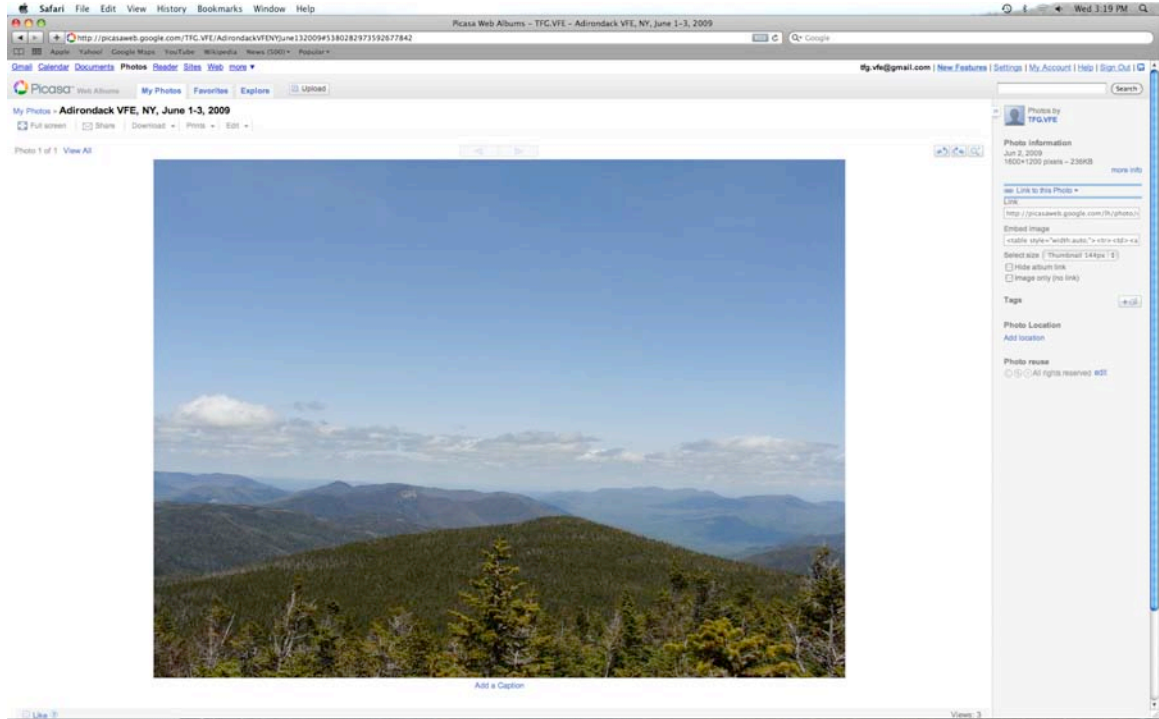
11. Select and open the album containing the photo to be added.



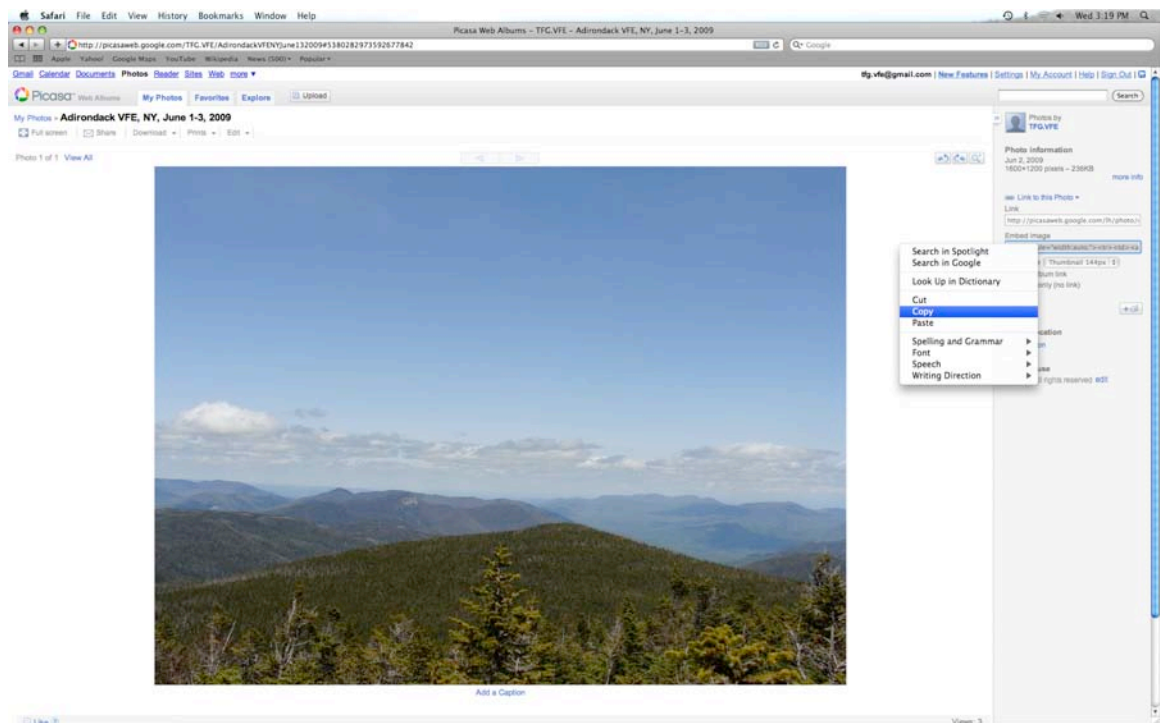
12. Select the photo to be added.



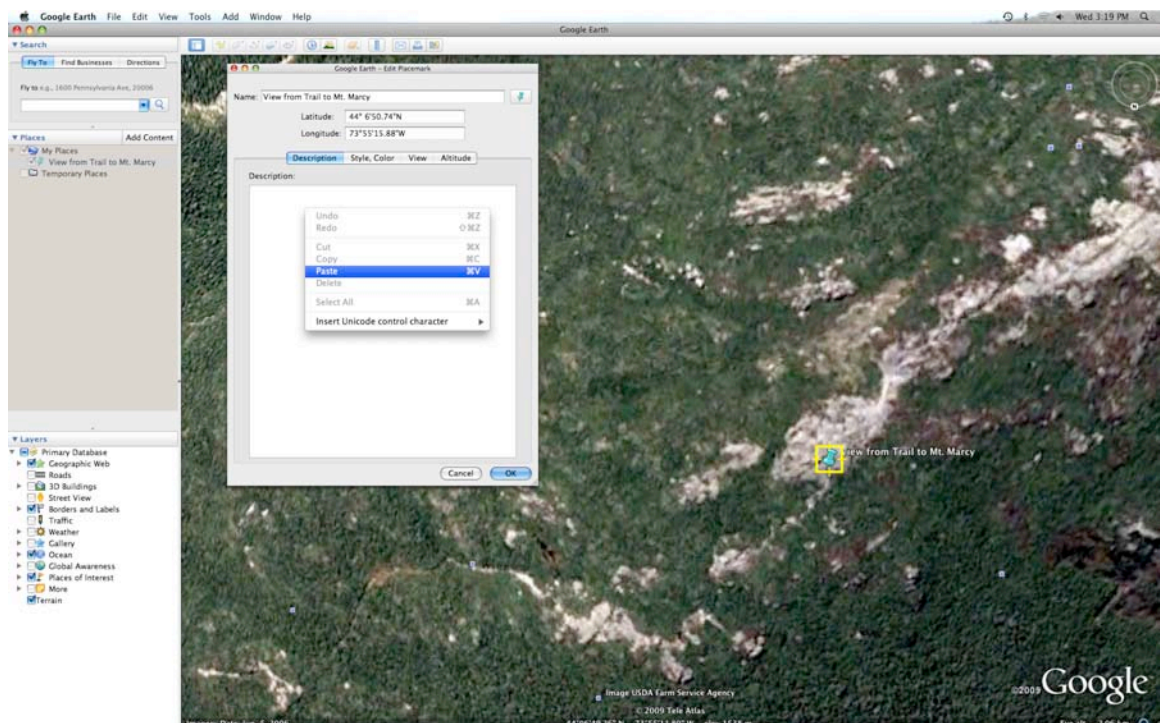
13. On the right hand side there is a spot to click “Link to this Photo”. Click this spot and two boxes open below. These boxes house the code that you use to add pictures to the placemark.



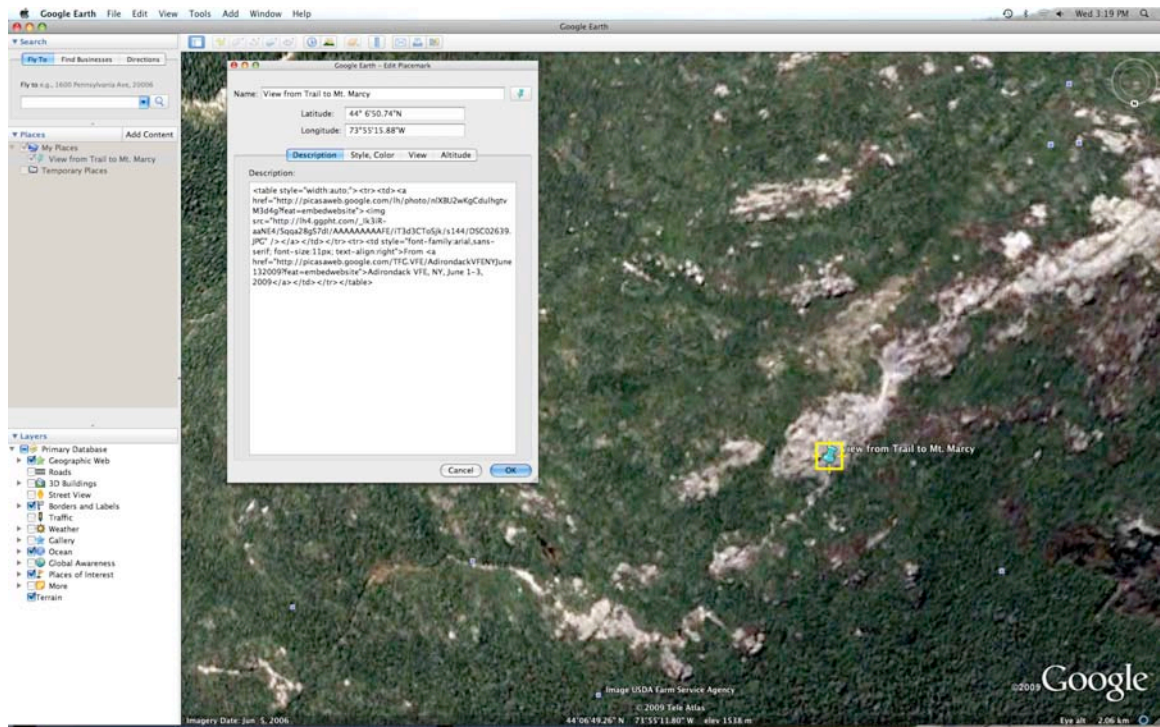
14. Under “Link to this Photo” note the “Select one” spot. This drop menu allows you to select the size the photo will appear once added to the placemark. Choose the appropriate size for your project. Once you have selected the size, highlight the text in the box labeled “Embed image”. Right click and select “Copy” to copy the text.



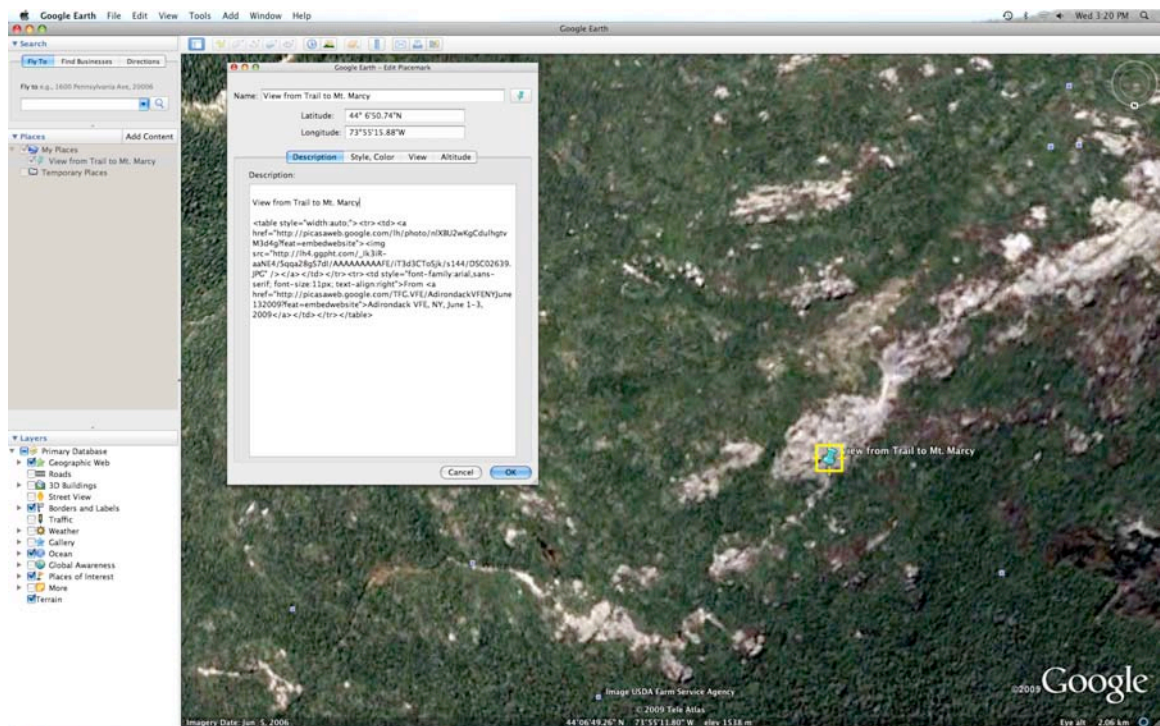
15. Return to Google Earth and the “Edit Placemark” window. “Paste” the text into the “Description” section.



16. Once the code is pasted into the “Description” box, the selected photo will appear when the placemark is clicked.



17. If you would like to add additional text or a caption, simply type the desired text into the “Description” box. Note: To keep the photo link in tact DO NOT change anything about the link that you pasted in. It is best to add text above or below and keep a few spaces between the link and the added text.



18. You have successfully added a Placemark and it now includes a picture and caption!

