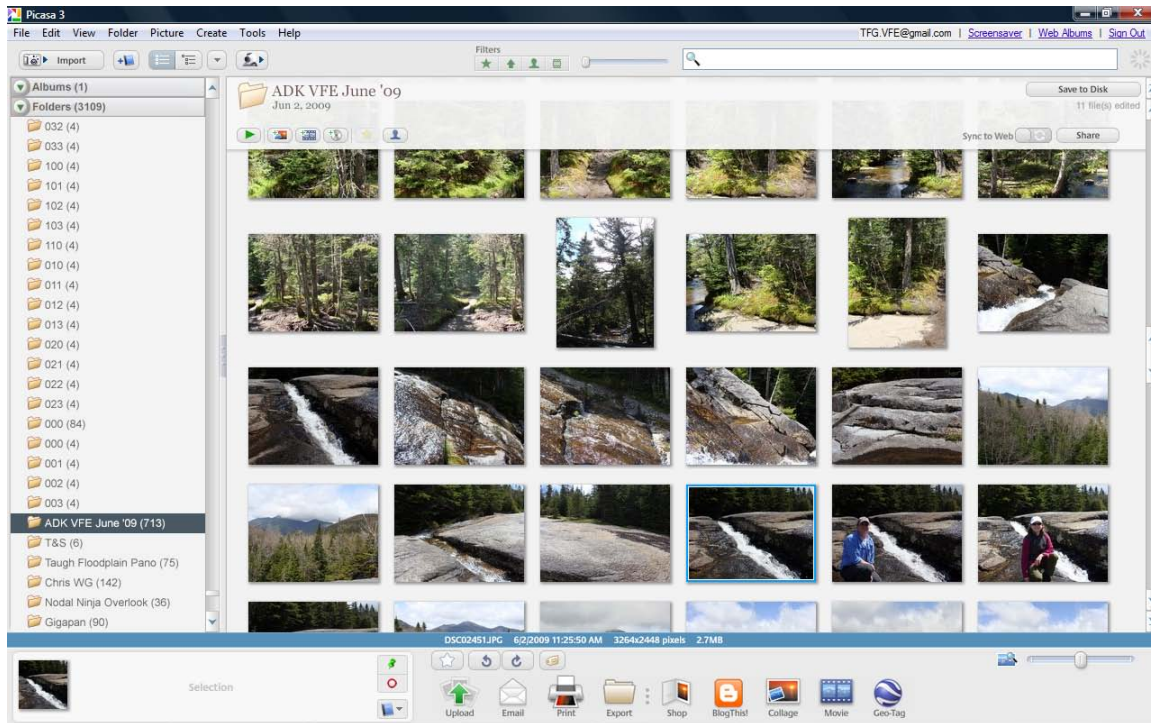


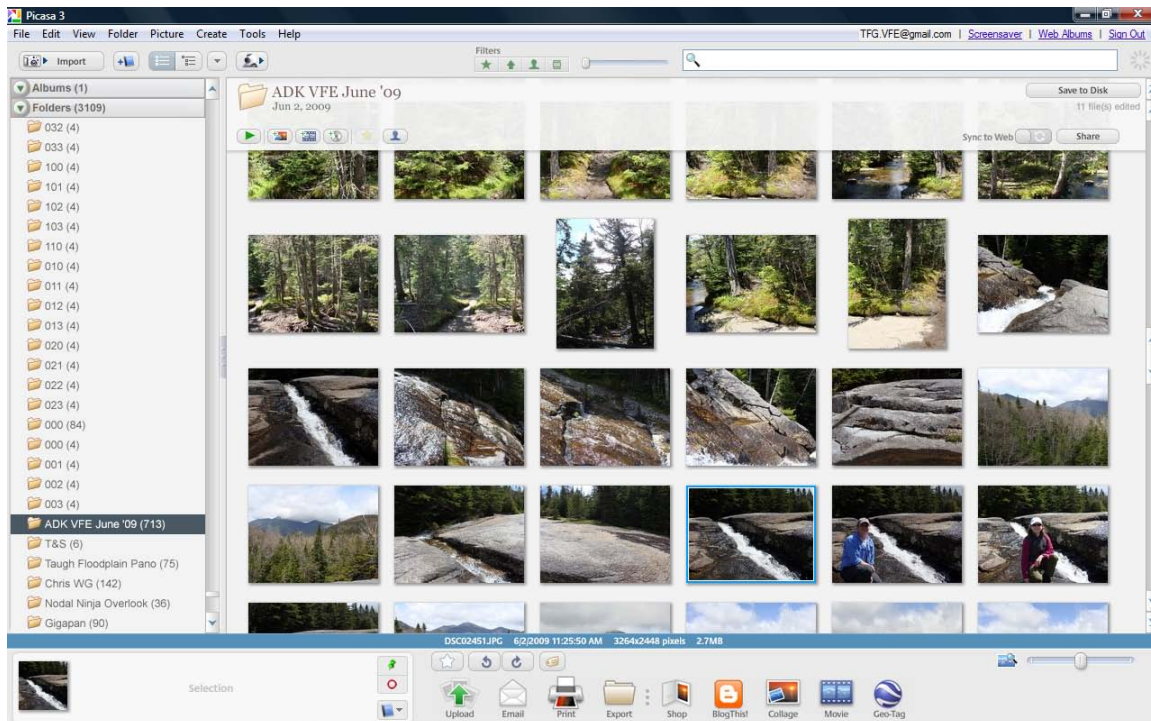
Using Google Earth for PC Users

How to upload pictures from Picasa to Google Earth

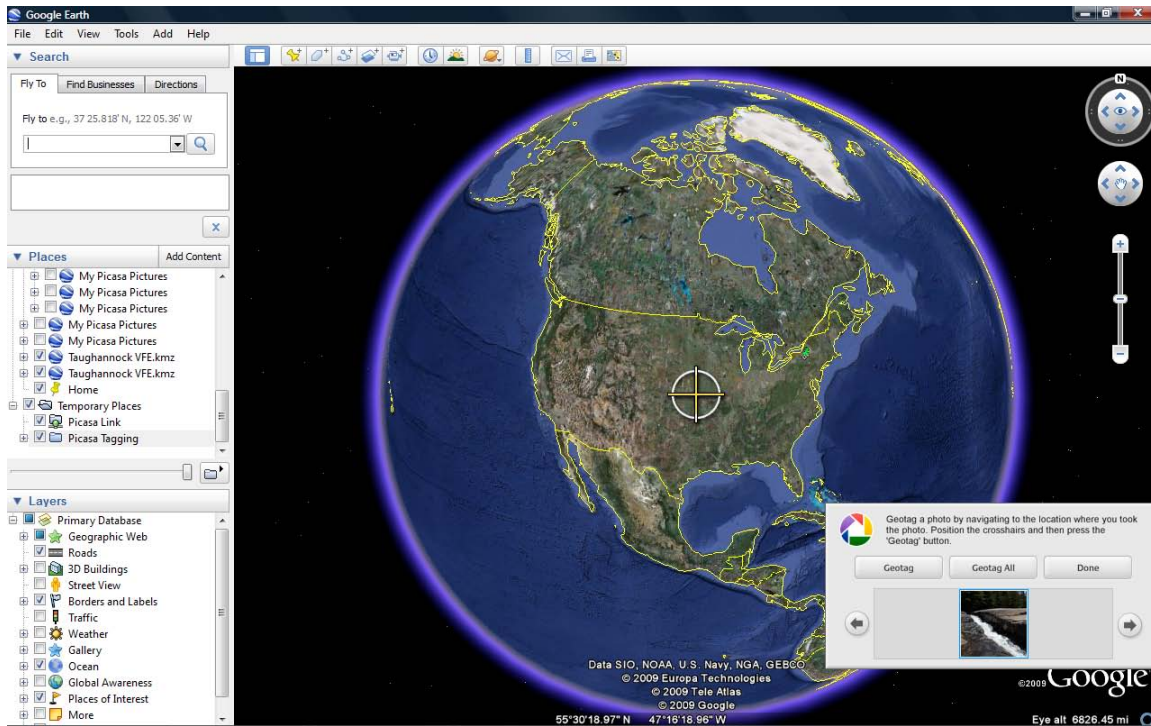
1. Open Picasa on your computer and select a photo you would like to upload to Google Earth.



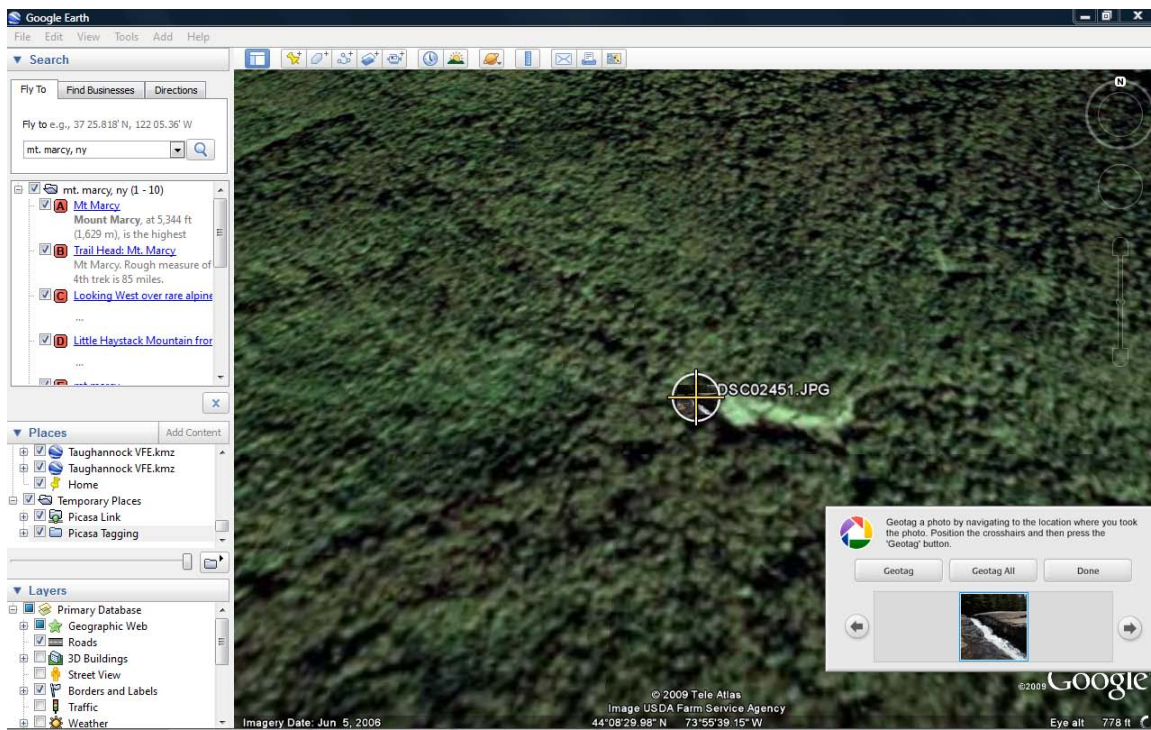
2. Click the Google Earth icon labeled "Geo-Tag" in the bottom right hand corner of the screen.



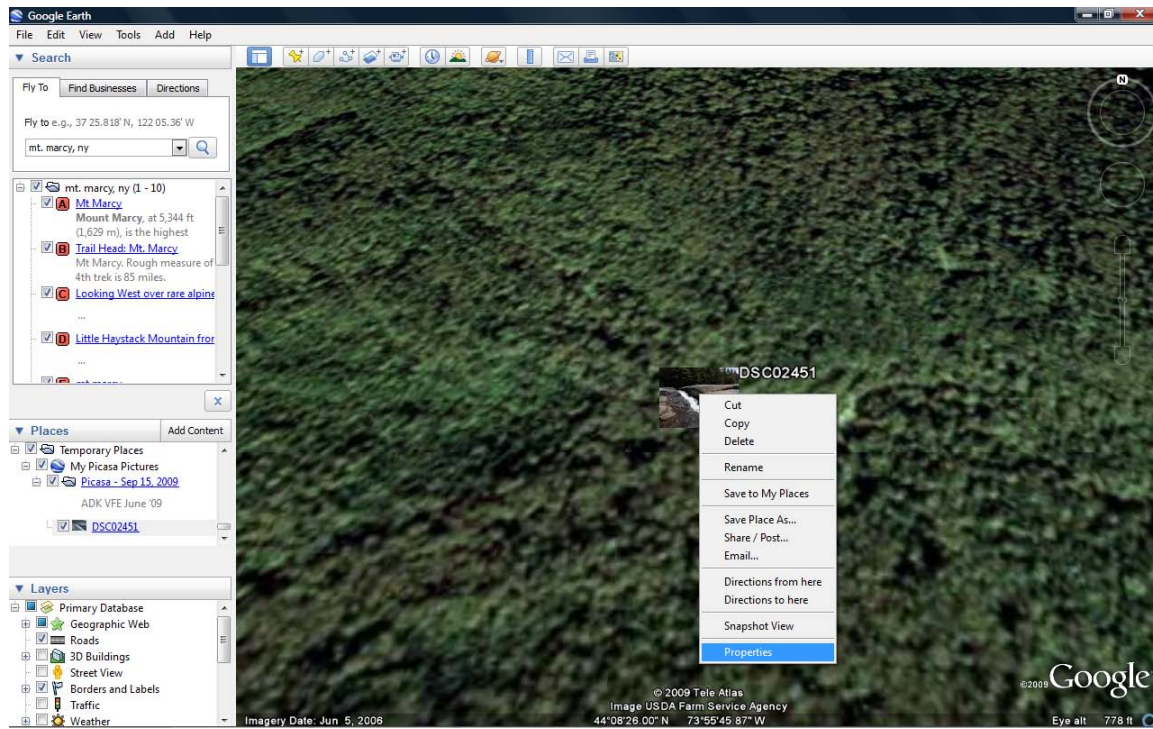
3. Google Earth will open up and you will see crosshairs on the Earth. Position these crosshairs over the position your photo was taken (hint: zoom in for more accuracy or use the Fly To menu bar to input your location with text or lat/long coordinates). Once the crosshairs are in position, click the “Geotag” button.



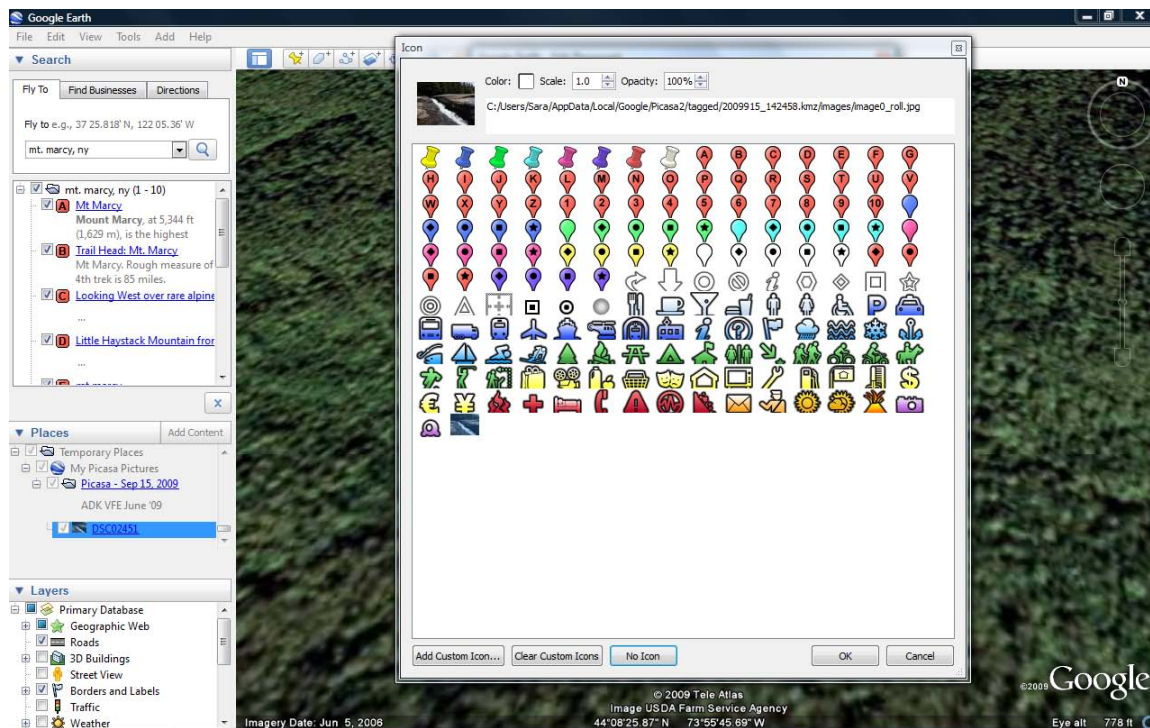
4. Once your picture has been geo-tagged it will show up as a mini picture labeled as it is on your computer (You can change its label and icon for the photo). To see your photo full sized just double click on the mini photo and a popup window will appear with your full sized photograph.



5. To change the label of your photo, right click on the photo and click on the “properties” category.

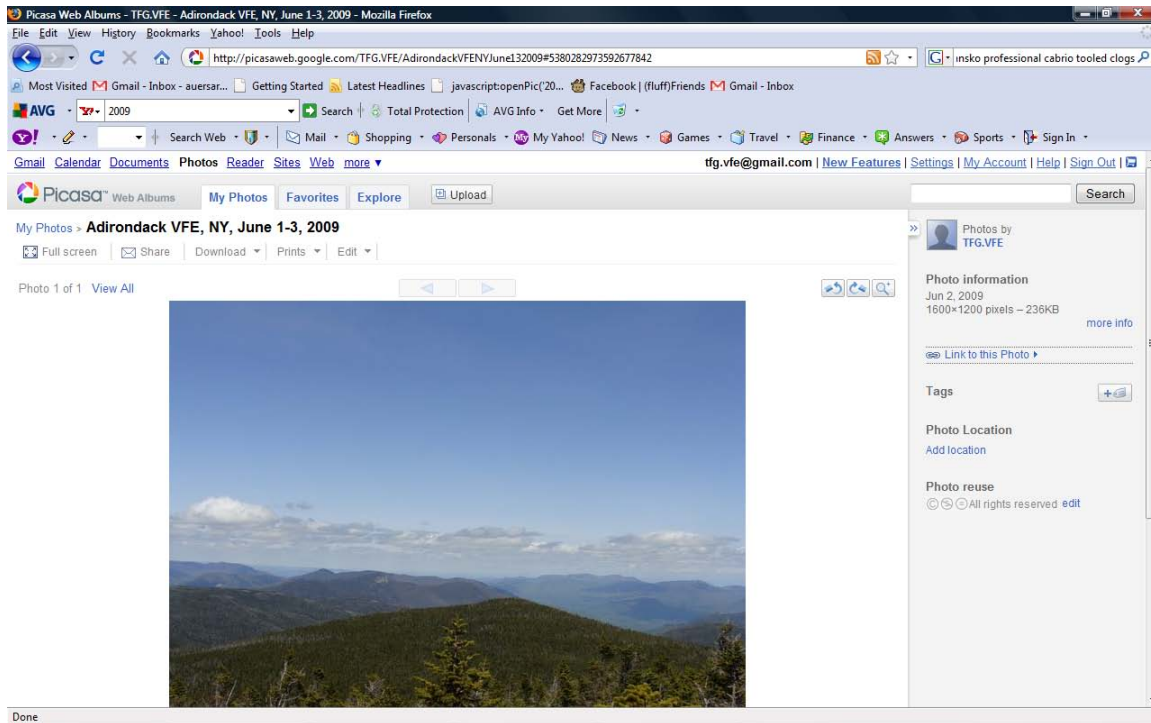


7. To change the icon for your picture (every picture you upload shows up originally as a thumbnail sized version of your picture) click on the small thumbnail of your picture in the properties window next to the Name field. The following window will then appear and you may choose any icon you want or none at all to replace the thumbnail picture icon.

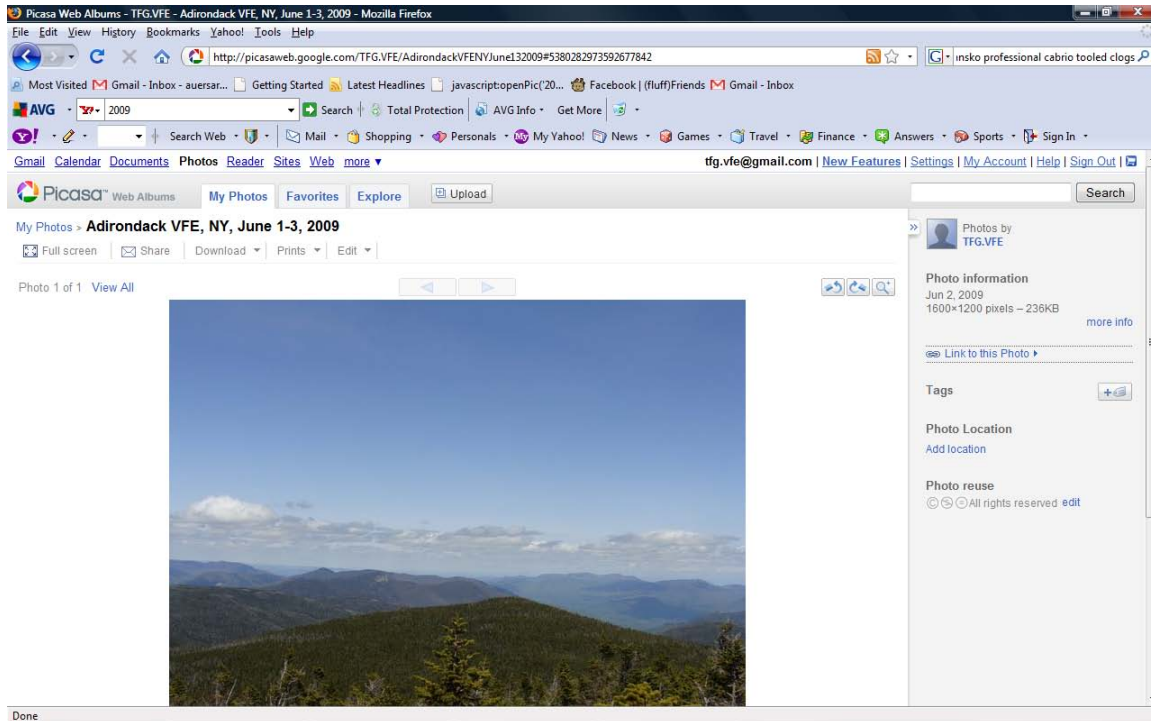


How to insert a picture within your placemark/photo

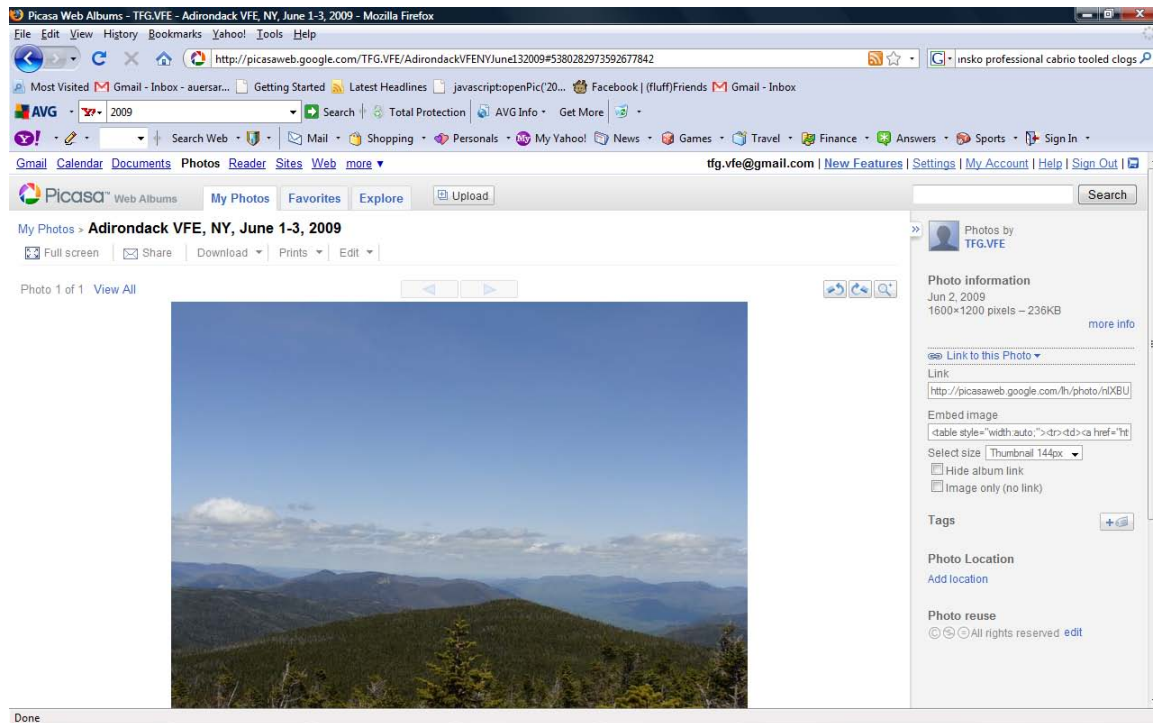
2. Within the same properties box for a photograph, you can embed more pictures just as you embedded text/links. To do this, you must first open Picasa Web Albums to the photo you would like to embed and select it.



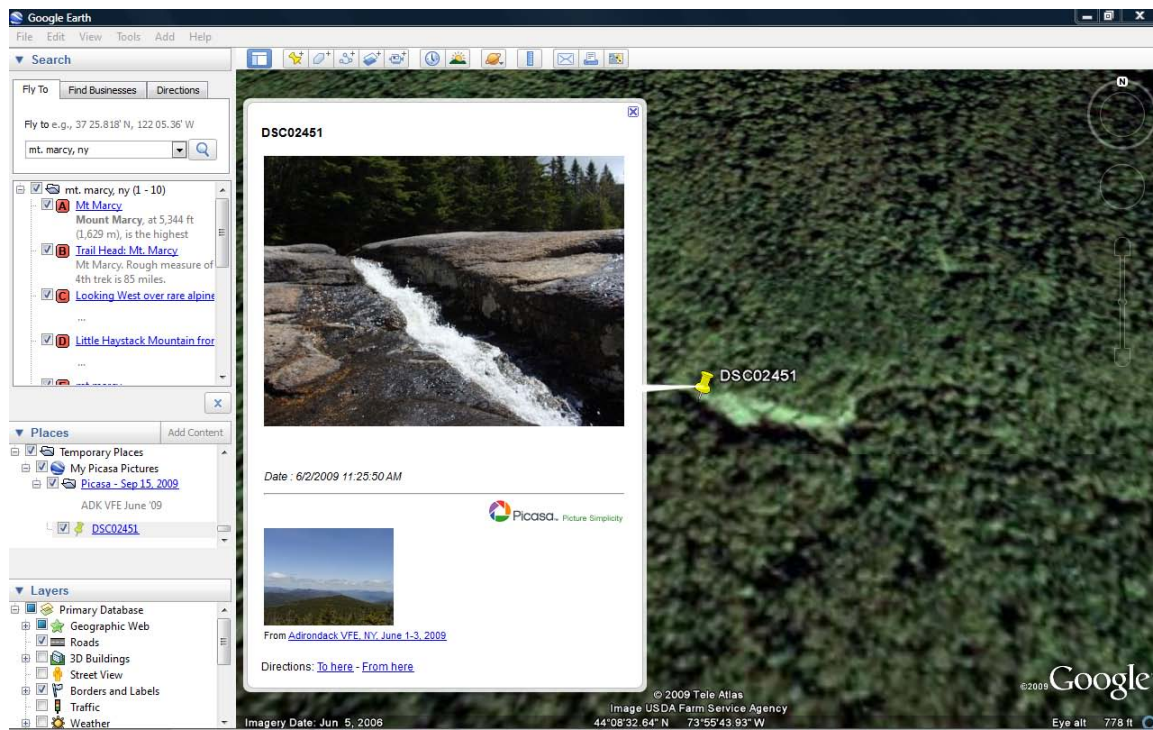
3. Once this picture is selected you will see an option to the right of the screen that says “Link to this photo”. Click this text.



4. Once you click “Link to this Photo”, an extended menu will open below that provides you with html code that you can copy. Copy the html code under the text that reads “Embed image”.



5. Return to Google Earth and open the “Properties” window for the photo you are embedding your image in. In the “Description” window you can paste your html code (just like inserting text/links) and once you click “Ok” and open your picture again, the image will be embedded above or below your original photo.



6. If you'd prefer your embedded picture to be larger than thumbnail size, return to Picasa Web Albums and in the Select size pulldown menu on the right hand side of the screen, choose your image size (from thumbnail-default size, to large-original picture size). Once you have chosen your image size you can copy the Embed image html code into your Google Earth Properties Description window, and the corresponding embedded image will reflect the size you chose.

